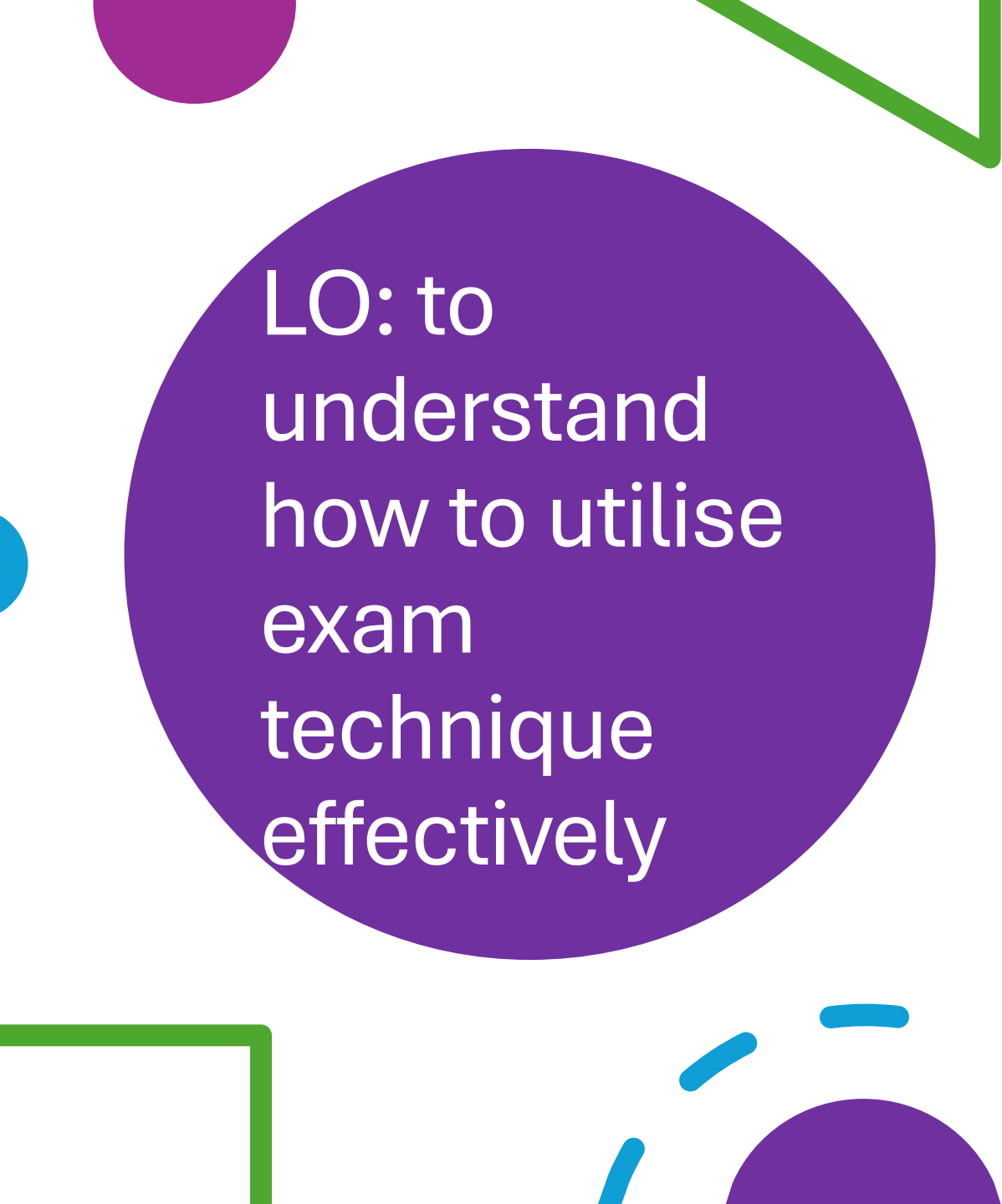


Exam Techniques

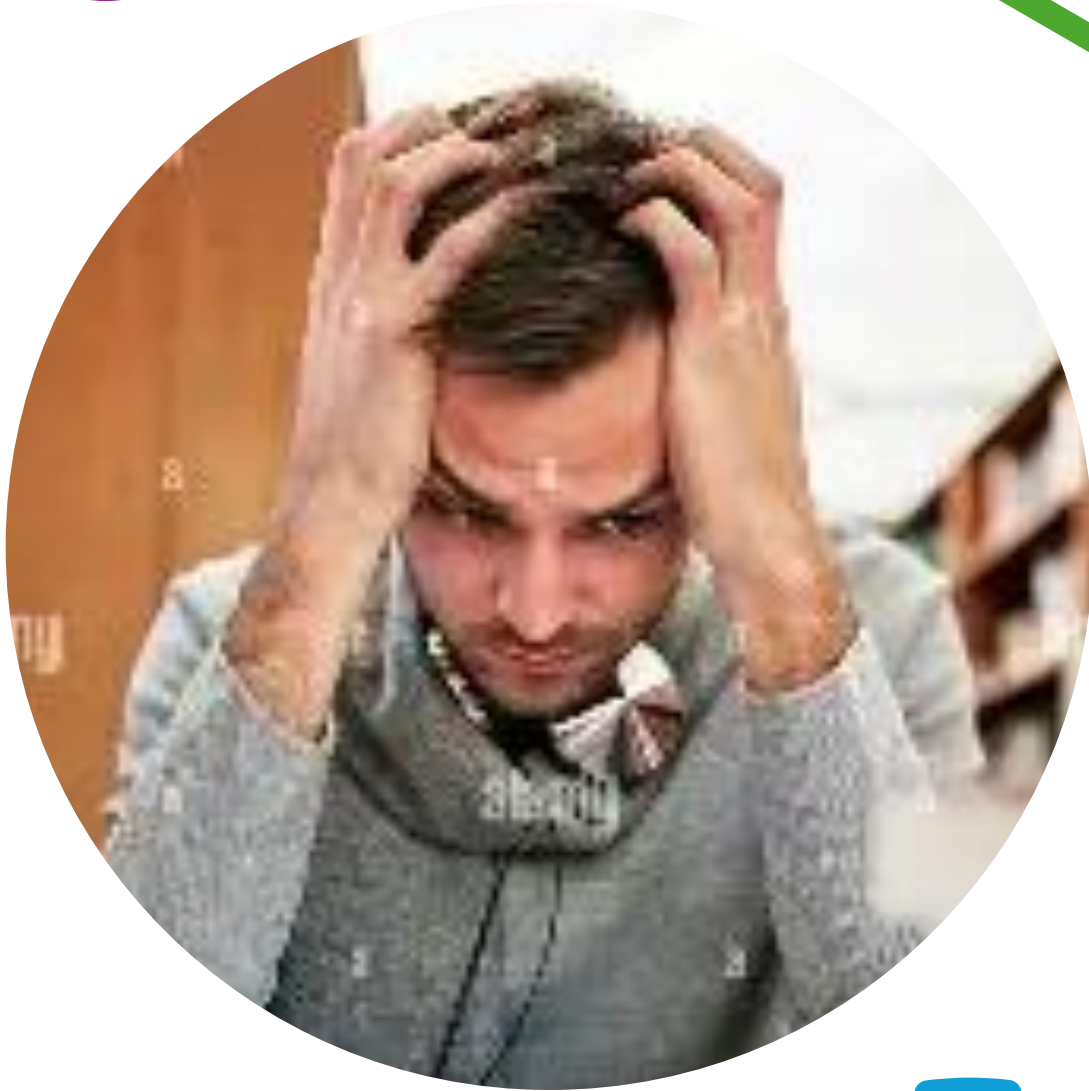




LO: to
understand
how to utilise
exam
technique
effectively

• -

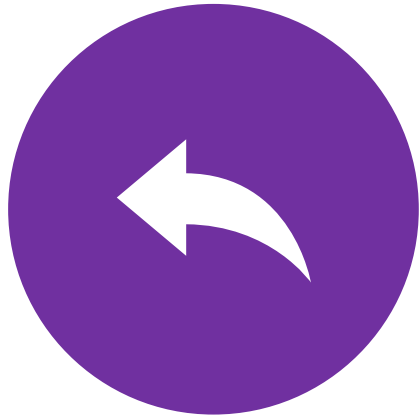




It is exam season
and this student is
feeling
overwhelmed.

Can you relate?

In today's session



HAVE YOU EVER BLANKED OUT IN
AN EXAM, EVEN THOUGH YOU
HAVE REVISED?



EXAMS AREN'T JUST ABOUT WHAT
YOU KNOW, THEY'RE ABOUT
HOW YOU USE WHAT YOU KNOW.



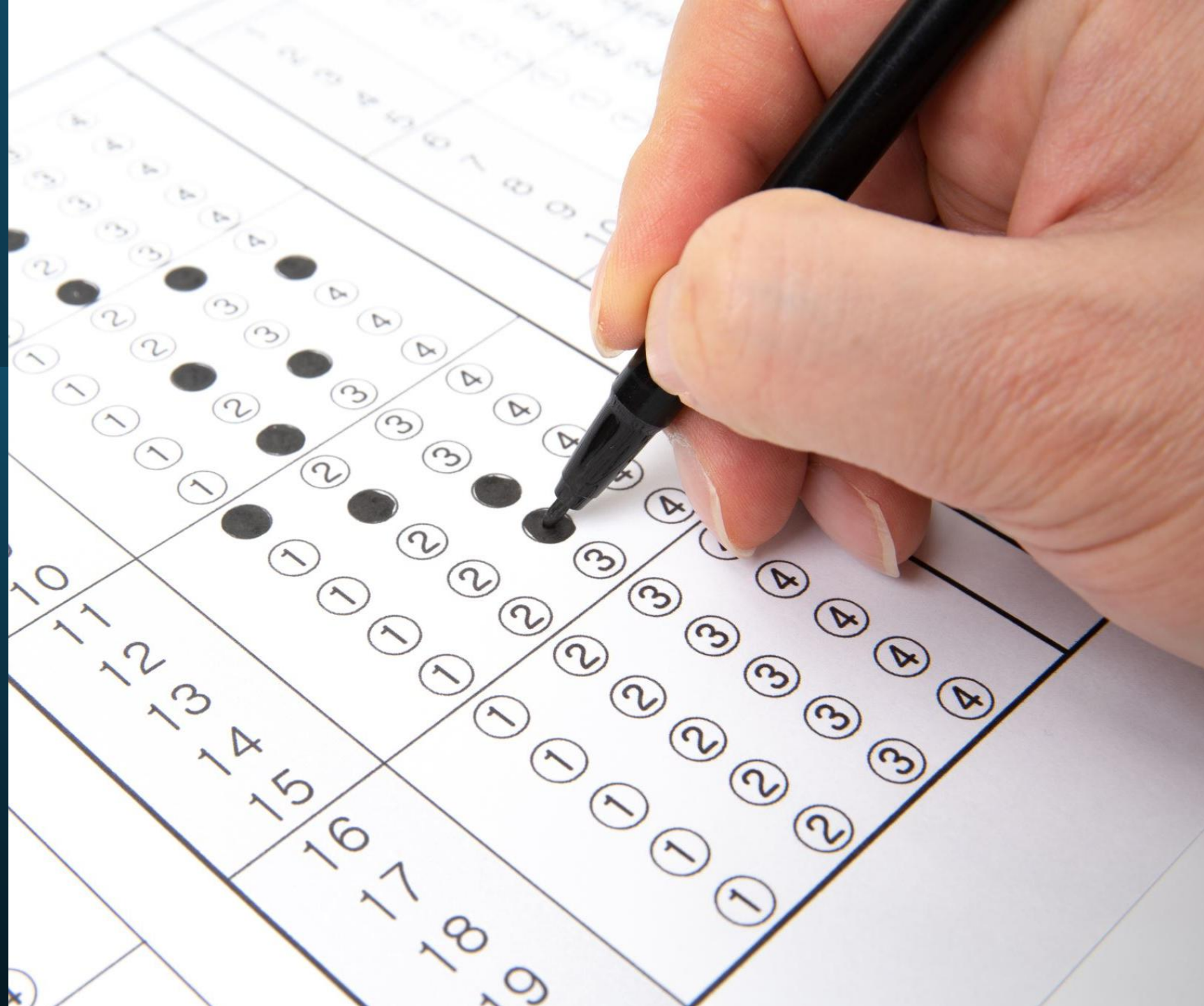
TODAY WE'LL UNLOCK SOME
STRATEGIES TO HELP YOU
PERFORM AT YOUR BEST

Task



What top tips would you give to another 16 year old on the day of the exam?

5 Golden Rules for Exam Success



1) Plan before you write

Use 30 – 45
seconds to jot
down key points for
longer questions

Reduces panic

Helps to give
structure

2) Timing is everything

For example, if you have 60 minutes for 30 marks, spend about 2 minutes per mark

It is important – to leave 5 minutes to check through answers at the end of the exam

3) Answer the question Not the topic



READ THE QUESTION
CAREFULLY



UNDERLINE KEY WORDS IN
THE QUESTION



GIVE A FOCUSSED ANSWER
BASED ON THE QUESTION

4) Use the marks to your advantage

If it is 1 mark,
give 1 clear point

If it is 2 marks,
give 1 clear point
with an
explanation

5) Stay Calm

Deep breaths

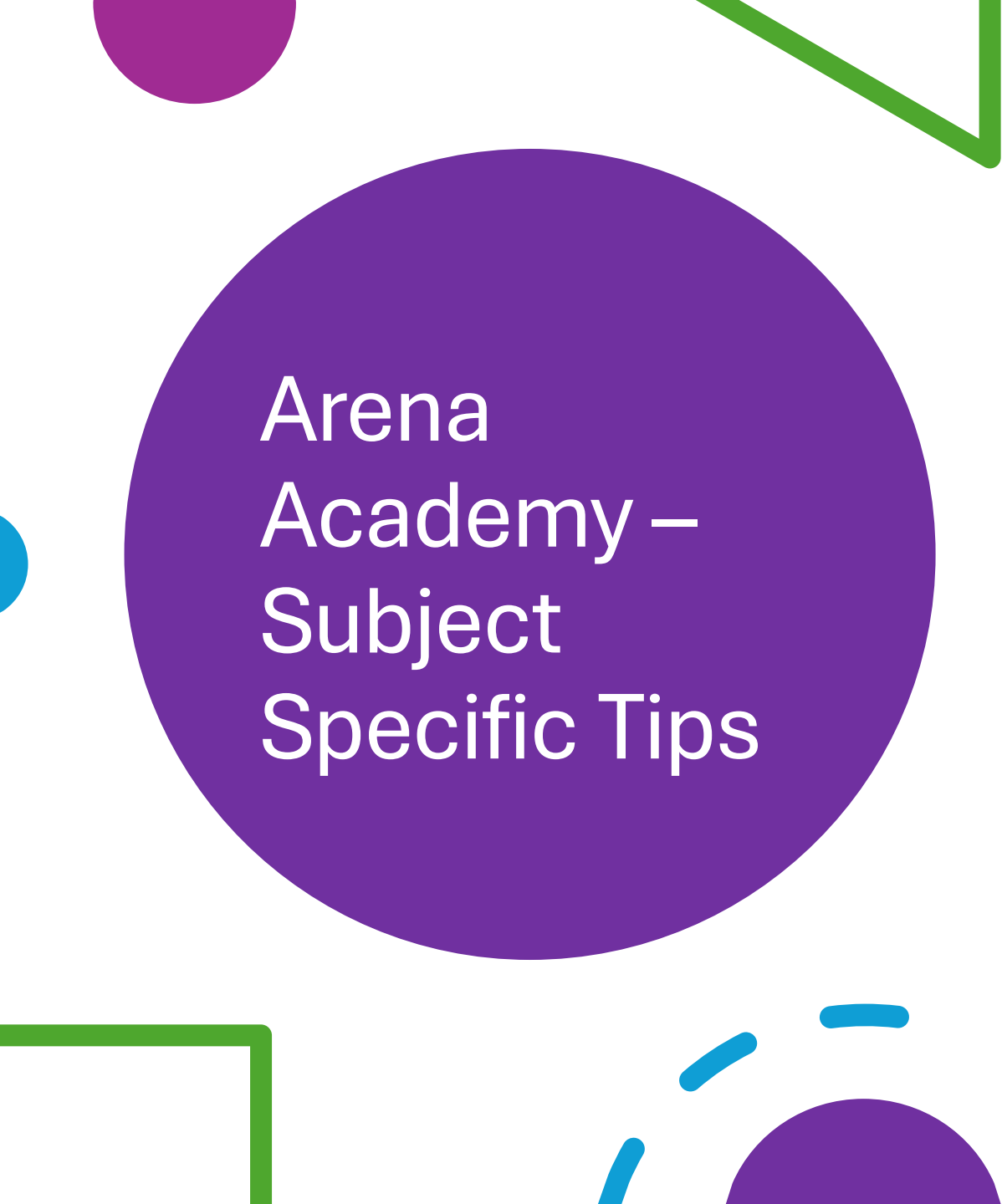
If you get stuck,
move on to another
question. Return to
the unanswered
question later on

Command Words

GCSE Command Words – Student Handout

Understanding command words is the key to unlocking marks in exams. Command words tell you exactly what the question is asking you to do. Use this guide to help you match your answer to the question every time!

Command Word	What It Means	Top Tip
Identify / State / Name	Write down a fact or piece of information. No explanation needed.	Keep it short – just the fact.
Describe	Say what you see or what happens. Focus on key features.	Paint a picture with words – step by step.
Explain	Give reasons or say why something happens.	Use 'because' or 'this leads to...' to build your answer.
Outline	Give the main points, but briefly.	Like a summary – no deep detail needed.
Compare	Show similarities and/or differences.	Use words like 'whereas', 'however', 'both'.
Contrast	Show only the differences.	Focus on what makes them different, not the same.
Analyse	Break into parts and explain how they link.	Look for causes, effects, relationships.
Assess	Weigh up importance or value.	Explain pros and cons, then give a balanced view.
Evaluate	Judge overall success or impact with evidence.	PEE/PEEL: Point – Evidence – Explain – Link.
Discuss	Give different sides of an argument.	Show both sides, then reach a conclusion.
Justify	Give reasons for your answer or choice.	Back up your answer with evidence.
Calculate	Work out the answer mathematically.	Show your working – you might get marks even if wrong.
Interpret	Explain what data, graphs, or information mean.	Look for trends, patterns or messages.
Suggest	Give a reasonable answer based on what you know.	Think logically – no single 'right' answer.
Complete	Fill in a table, diagram, or sentence.	Copy carefully – check spelling.

A decorative graphic featuring a large purple circle on the left side of the slide. To its right, there is a green line forming a right-angled corner. In the bottom left corner, there is a green line forming another right-angled corner. At the bottom center, there are several blue curved lines and a purple semi-circle.

Arena Academy – Subject Specific Tips

- Speak to subject teachers for more information



Geography

- For Geography exam questions we use BUG- Box the command word, underline key aspects of the question.
- For graph analysis questions, we use TEA- Trend, Evidence, Anomaly
- As there are lots of case studies with different statistics- Flash cards are very useful



English

- For every question apply RUBA to fully understand what the question is asking you to do:
- R - Read the question carefully
- U - underline the command words
- B - box of key words you can apply to your answer
- A - annotate to help plan your response

A decorative graphic featuring a large purple circle on the left containing the text 'English Lang and Lit'. To its right is a green L-shaped line. At the bottom, there are several blue curved lines and a purple semi-circle.

English Lang and Lit

- **Plan your long answers and big mark questions, create a quick 5 point plan where you outline the key points for each paragraph.**
- This will help student organise their ideas and avoid repeating themselves. Statistically students who thoughtfully plan their response tend to get higher marks.



Business Studies

- Read the case study – PICC
- Underline key words
- Relate every answer to the case study

RE

PAPER 1-How to answer a 12 mark question

Paragraph 1

Some people would agree with this statement.....
This is because in the Bible/Quran it says.....
This shows that.....

The more
points , the
better!!!

Paragraph 2

On the other hand, some people would argue that.....
This is because in the Bible/Quran it says.....
This shows that.....

Paragraph 3

Some people would still agree with this statement.....
This is because in the Bible/Quran it says.....
This shows that.....

Write in paragraphs
Use connectives –
develop your answers

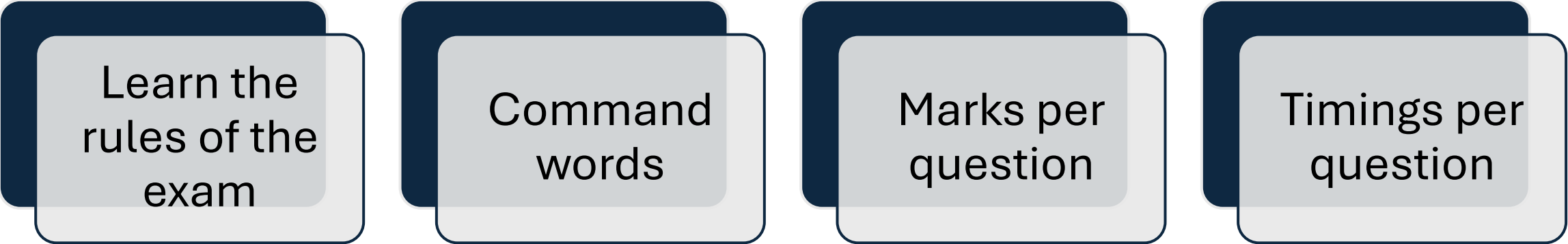
Final Message

“Exams are not about being perfect. They are about showing what you know”

Confidence comes from preparation + practice, not just luck

This week, start answering exam questions under timed conditions. Check your answers against the mark scheme

Key takeaways



Learn the
rules of the
exam

Command
words

Marks per
question

Timings per
question

Your turn...

2

Section A: Reading

Answer **all** questions in this section.
You are advised to spend about 45 minutes on this section.

01

Read again the first part of the source, from **lines 1 to 5**.

List **four** things about the old man from this part of the source.

1 _____

2 _____

3 _____

4 _____

[4 marks]

Do not write outside the box

0	4
---	---

Focus this part of your answer on the second part of the source, from **line 16 to the end**.

A student said, 'While it seems that the old man is widely seen as a failure, in this part of the story the writer shows that the boy still has faith in him and that they greatly respect each other.'

To what extent do you agree?

In your response, you could:

- consider your impressions of the old man as a failure
- evaluate how the writer presents the respect between the boy and the old man
- support your response with references to the text.

[20 marks]

*Do not write
outside the
box*

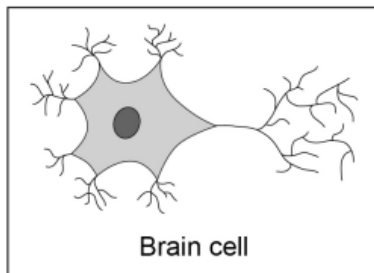
0 1 . 1

Draw **one** line from each type of cell to the organ system where the cell is found.

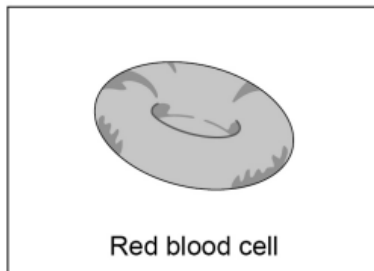
[3 marks]

Type of cell

Organ system

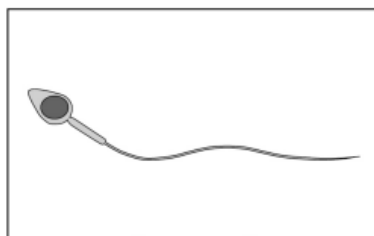


Circulatory system



Nervous system

Reproductive system



Respiratory system

0	1	.	2
---	---	---	---

Explain **one** way a sperm cell is adapted for its function.

[2 marks]

*Do not write
outside the
box*

Question 4 continues on the next page